

		PAY				
		<i>s. d.</i>		<i>s. d.</i>		
Blacksmith, 5th Class	.. ..	32	1			} A week, excluding allowances mentioned on page 13.
Blacksmith, 4th Class	.. ..	43	9			
Rising to Blacksmith, 1st Class	.. ..	54	10 to 57	2		
and Chief Blacksmith	.. ..	63	0 to 70	0		

For example, a Blacksmith, 1st Class, holding 3 good conduct badges (average age 31), married, and with two children, would receive pay and allowances totalling 85s. 1*d.* a week.

## Joiners

Candidates must be good workmen at their trade.

*Age.*—19 to 28 years.

*Physical Standard.*—As for Seamen (Special Service) (see page 15).

*Eyesight.*—As for Blacksmiths (see page 30).

### *Nature of Examination*

*Educational.*—As for Blacksmiths.

*Practical.*—Must be able to do Joiner's work, such as dove-tailing, panelling and sash-making, and possess a thorough working knowledge of ship's carpentry and joinery (including the repair and polishing of furniture and cabin fittings).

The examination includes a practical test of the candidate's ability to use the tools of his trade properly.

Candidates under 21 years of age are entered as Joiners, 5th Class; candidates over 21 as Acting Joiners, 4th Class (leading rates in each case). On advancement to the rating of Joiner, 3rd Class, they rank as Petty Officers, and on advancement to the rating of Chief Joiner, as Chief Petty Officers.

Joiners on entry are expected to equip themselves with a minimum set of tools at their own expense in accordance with the general custom of their trade.

		PAY				
		<i>s. d.</i>		<i>s. d.</i>		
Joiner, 5th Class	.. ..	30	4			} A week, excluding allowances mentioned on page 13.
Joiner, 4th Class	.. ..	42	0			
Rising to Joiner, 1st Class	.. ..	53	1 to 55	5		
and Chief Joiner	.. ..	61	3 to 68	3		

For example, a Joiner, 1st Class, having 3 good conduct badges (average age 31), married and with 2 children, would receive pay and allowances totalling 83s. 4*d.* a week.

## Painters

Candidates must be good workmen at their trade.

*Age.*—19 to 28 years.

*Physical Standard.*—As for Seamen (Special Service) (see page 15).

*Eyesight.*—As for Blacksmiths (see page 30).

*Nature of Examination*

*Educational.*—As for Blacksmiths.

*Practical.*—Must be competent to undertake plain painting work ; mixing paint of different colours and shades ; painting a door with white enamel ; staining and varnishing in imitation of different sorts of woods ; graining and varnishing in imitation of pine and oak ; marbling ; white, black, and gold sienna ; writing with paint in block and roman letters, italics and figures ; glass cutting of different shapes ; calculating the proportion of paint required for a given surface ; to be able to answer questions relative to the proportion of oils, turpentine and dryers, which should be used for mixing a given quantity of the various descriptions of the paints in general use on board ship ; to possess a knowledge of the preparation of the surfaces of wood and steel to receive paints and enamels.

Candidates under 21 years of age are entered as Painters, 5th Class ; candidates over 21 as Acting Painters, 4th Class (leading rates in each case). On advancement to the rating of Painter, 3rd Class, they rank as Petty Officers, and on advancement to the rating of Chief Painter, as Chief Petty Officers.

Painters on entry are expected to equip themselves with a minimum set of tools at their own expense in accordance with the general custom of their trade.

*Pay.*—As for Joiners (see page 31).

**Plumbers**

Candidates must be good workmen at their trade.

*Age.*—19 to 28 years.

*Physical Standard.*—As for Seamen (Special Service) (see page 15).

*Eyesight.*—As for Blacksmiths (see page 30).

*Nature of Examination*

*Educational.*—As for Blacksmiths.

*Practical.*—Must be able to work up a corner in sheet lead of at least 3 inches ; wipe a joint on a pipe of not less than 2 inches in diameter both horizontally and vertically ; and make a straight length and an elbow of copper stove funnelling of 6 inches in diameter.

*Note.*—Preference is given to men who possess some knowledge of working in tin, brass, and copper.

Candidates under 21 years of age are entered as Plumbers, 5th Class ; candidates over 21 as Acting Plumbers, 4th Class (leading rates in each case). On advancement to the rating of Plumber, 3rd Class, they rank as Petty Officers, and on advancement to the rating of Chief Plumber, as Chief Petty Officers.

Plumbers on entry are expected to equip themselves with a minimum set of tools at their own expense in accordance with the general custom of their trade.

*Pay.*—As for Joiners (see page 31).

**Sick Berth Staff**

Candidates for training in this branch must be intelligent men between the ages of 18 and 28 years.



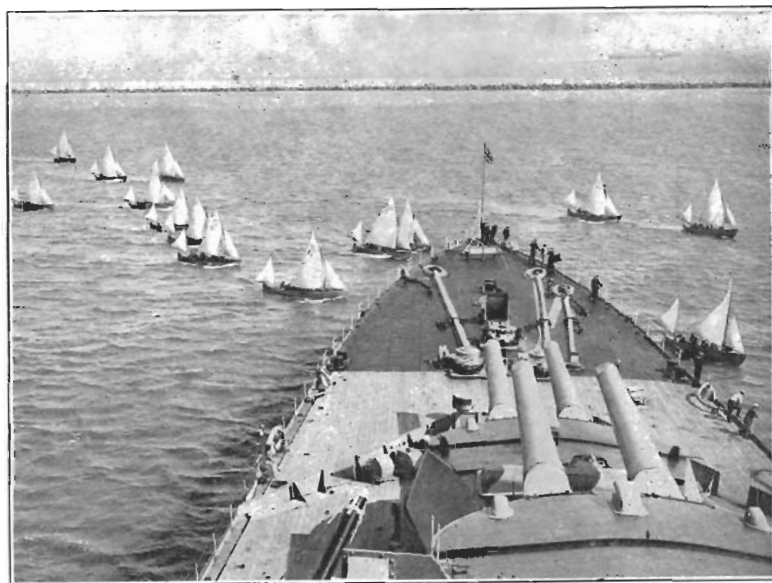
*Photo by The "Topical" Press Agency, Ltd.*

VISITORS' DAY



*[Photo by Lieut. C. D. H. Briggs.]*

KEEPING FIT ON FOREIGN SERVICE. A NAVAL TEST MATCH: PORT WATCH *v.* STARBOARD WATCH.



*[Photo by Wide World Photos.]*

THE FLEET SAILING REGATTA

*Physical Standard.*—As for Seamen (Special Service) (see page 15).

*Eyesight.*—6/12 both eyes together, worse eye not less than 6/24 (without glasses).

Near vision—Snellen D=0.6 each eye tested separately (with glasses if required). Colour vision Grade II.

#### *Nature of Examination*

Reading, writing, and a fair knowledge of arithmetic (simple rules, simple money sums, weights and measures, and a knowledge of decimals, proportion, and percentages).

Accepted candidates are entered as Sick Berth Attendant Probationers, and given a course of instruction at a Royal Naval Hospital, those approved of being advanced to Sick Berth Attendant.

A free outfit of clothing is given, a portion being supplied on entry and the remainder on successfully passing the period of probation.

PAY		s.	d.	s.	d.		
Sick Berth Attendant Probationer		14	0			}	
Sick Berth Attendant .. ..		22	9 to 27	5			A week, excluding allowances mentioned on page 13.
Leading Sick Berth Attendant ..		33	10 to 36	2			
Sick Berth Petty Officer .. ..		45	6 to 51	4			
Sick Berth Chief Petty Officer ..		56	0 and up-				
			wards				

Allowances are also granted, as follows, to those who qualify themselves by examination :

	s.	d.	s.	d.	d.
As X-Ray Assistants .. ..	..	..	..	..	6 a day.
As Operating Room Assistants ..	..	..	..	..	6 ,,
As Laboratory Assistants .. ..	..	..	..	..	6 ,,
As Masseurs .. ..	..	..	..	..	6 ,,
On duty in Zymotic Wards .. ..	..	..	..	..	6 ,,
On duty in Lunatic Wards .. ..	..	..	..	..	6 ,,
On duty dispensing .. ..	..	..	..	..	2 ,,

As an example may be quoted a Leading Sick Berth Attendant, qualified as an Operating Room Assistant, holding two good conduct badges (average age 27), married and with one child, whose pay would be 62s. 10d. a week.

### **Writer and Supply Branches**

*Duties.*—The duties of Writers include keeping accounts, rendering returns, correspondence, etc., and those of the Supply Branch relate to store-keeping, victualling and clothing of men, and the keeping of accounts in connection with such transactions.

*Age.*—Candidates for entry in these branches must be between the ages of 18 and 23 years.

*Physical Standard.*—As for Seamen (Special Service) (see page 15).

*Eyesight.*—The wearing of glasses is not necessarily a bar to entry in these ratings provided that, without glasses, the candidate is able to read Snellen 6/12 both eyes together, worse eye not less than 6/24 and, for near work, Snellen D=0.6 (Jaeger, 2) with each eye separately (with glasses if required). Colour vision Grade III.

## PAY

	<i>s.</i>	<i>d.</i>	<i>s.</i>	<i>d.</i>	
Writer and Supply Probationer ..	17	6			} A week, excluding allowances mentioned on page 13.
Writer and Supply Assistant ..	24	6 to 29	2		
Leading Writer and Leading Supply Assistant .. .. .	35	7 to 37	11		
Petty Officer Writer and Supply Petty Officer .. .. .	47	3 to 53	1		
Chief Petty Officer Writer and Supply Chief Petty Officer ..	57	9 and up- wards			

A limited number of Writer ratings who are competent shorthand-typists are eligible for extra pay at the following rates after passing a qualifying examination :—

	<i>s.</i>	<i>d.</i>
Lower grade .. .. .	5	3 a week.
Higher grade .. .. .	10	6 „

In addition, extra pay is allowed for shorthand work at Courts Martial, Courts of Inquiry, etc.

The following are examples of what an average intelligent man may expect to get. (Kit Upkeep Allowance is not included, as it may be taken to be expended for its proper purpose—but it must then be remembered that normally there are no deductions to be made from pay for clothing.)

	<i>s.</i>	<i>d.</i>	Per week. <i>s. d.</i>	Per week. <i>s. d.</i>
Enters at 19. Unmarried—				
Probationer .. .. .			17	6
At 20. Unmarried—				
Writer or Supply Assistant .. .. .			24	6
Advanced Leading rate at 23. Married at 24—				
Leading rate over 3 years .. .. .			37	11
1 Good Conduct Badge .. .. .			1	9
Marriage allowance .. .. .			17	0
				56 8
Advanced to Petty Officer at 28. Married and 1 child—				
P.O. rate .. .. .			47	3
2 Good Conduct Badges .. .. .			3	6
Marriage and children's allowance .. .. .			22	0
				72 9
At, say, 34, is a Chief Petty Officer with 3 badges ; with 2 children—				
Chief Petty Officer rate .. .. .			57	9
3 Good Conduct Badges .. .. .			5	3
Marriage and children's allowance .. .. .			25	0
				88 0
At, say, 40, if he has 3 children, he will be getting—				
Chief Petty Officer rate .. .. .			64	9
3 Good Conduct Badges .. .. .			5	3
Marriage and children's allowance .. .. .			27	0
				97 0

A Writer, in addition, may be getting shorthand-typist allowance.

## WARRANT RANK.

Attention is invited to page 37. A limited number (at present about seven per cent.) gain promotion to Warrant rank. This is probably at the age of about 38. The man then ceases to become eligible for his pension as a rating but is instead not required to retire until he is 50. His rate of pay as a Warrant Officer may then advance gradually up to about £8 a week. Retired pay varies from £100 to £270 according to the rank gained.

*Examination.*—Candidates are entered by examination, the subjects of which are :

English (including spelling, handwriting, and composition), and Arithmetic.

The syllabus of the examination in Arithmetic is as follows :—

Addition of sums of money ("tots").

The first four rules of arithmetic, simple and compound, vulgar and decimal fractions.

Making out invoices, etc.

Ratio, Proportion, Averages, Percentages.

Practice.

Simple Interest.

Credit will also be given for general smartness and knowledge as tested in conversation.

Candidates for entry as Writer Probationer are awarded marks for proficiency in shorthand.

Marks are awarded to candidates for entry as Writer or Supply Probationer who produce a certificate of efficiency in Typewriting from a competent educational authority, or testimonials from employers by whom they have been employed as typists, stating the periods of such employment and their efficiency as typists.

*Instructions as to Examinations, when held*

Applicants before being accepted as candidates are required to produce a Certificate of Birth, evidence of previous employment, if any, and three satisfactory up-to-date references as to character.

Examinations are usually held in March, July and November. The actual date and place of an examination are announced shortly beforehand in the public press. Intending candidates should, when such an announcement appears, apply personally or by letter to the nearest R.N. Recruiting Office, or by letter to the Commodore, R.N. Barracks, at Chatham, Portsmouth or Devonport, or the Commanding Officer, H.M.S. *Cochrane*, Rosyth, for particulars and application forms.

Candidates must be medically examined at the Royal Naval Barracks, Portsmouth, Devonport, or Chatham, or at Rosyth (H.M.S. *Cochrane*), or at the Royal Naval and Royal Marine Recruiting Office, London, Birmingham, Bristol, Derby, Glasgow, Liverpool, Manchester, Newcastle-on-Tyne, or Southampton, prior to the date of the examination.

When applying, candidates should state whether they desire entry as Writer or Supply Probationer. Compliance with the wish of any candidate will, however, depend on the number of appointments made in each rating and at each port; and also on the qualifications shown by the candidate in the examination.

**Cooks****I.—CONTINUOUS SERVICE**

Men with aptitude for cooking and baking, who are educationally fit, are entered on probation as Assistant Cooks for training. If found fit after their period of training they are confirmed in the rating and are then selected according to (a) requirements, (b) suitability, (c) preference for specialisation as Cooks for ships' galleys and bakeries or as Cooks for Officers' galleys.

*Age.*—18 to 28 years.

*Physical Standard.*—As for Seamen (Special Service) (see page 15).

*Eyesight.*—As for Writers (see page 33).

*Nature of Examination*

Must be able to read and write and possess a knowledge of arithmetic (simple, first four rules; money, addition and subtraction only).

				PAY					
				<i>s.</i>	<i>d.</i>	<i>s.</i>	<i>d.</i>		
Assistant Cook	..	..	..	14	0			} A week, excluding allowances mentioned on page 13.	
Cook	..	..	..	22	9 to 27	5			
Leading Cook	..	..	..	33	10 to 36	2			
Petty Officer Cook	..	..	..	45	6 to 51	4			
Chief Petty Officer Cook	..	..	..	56	0 and up- wards				

**II.—NON-CONTINUOUS SERVICE**

Men between the ages of 17½ and 30 are entered for non-continuous service as Assistant Cooks for service in ships' galleys and bakeries. Men over 30 years of age are permitted to enter in special cases with prior Admiralty sanction.

Candidates sign an engagement to serve for 5 years provided their services are so long required. They are liable to discharge at any time for unsuitability, or on the paying off of their ships. Under certain conditions, however, men recommended on paying off, etc., who sign a new non-continuous service engagement and undertake to accept whatever Naval employment is found for them, may be borne on Depot books (with pay) for a limited period to await re-employment. They must accept no private shore engagement while so borne.

A register is kept at each Home Port of the names of non-continuous service Officers' Cooks or Ships' Cooks who have already served in the Navy in case their further services may be desired.

The conditions of pay, etc., for Officers' Cooks (non-continuous service) and Ships' Cooks (non-continuous service) are generally similar to those for continuous service.

**Officers' Stewards****I.—CONTINUOUS SERVICE**

Men between the ages of 18 and 25 are entered for service as Stewards of Officers' Messes or as personal servants to Officers.

*Physical Standard.*—As for Seamen (Special Service), (see page 15).

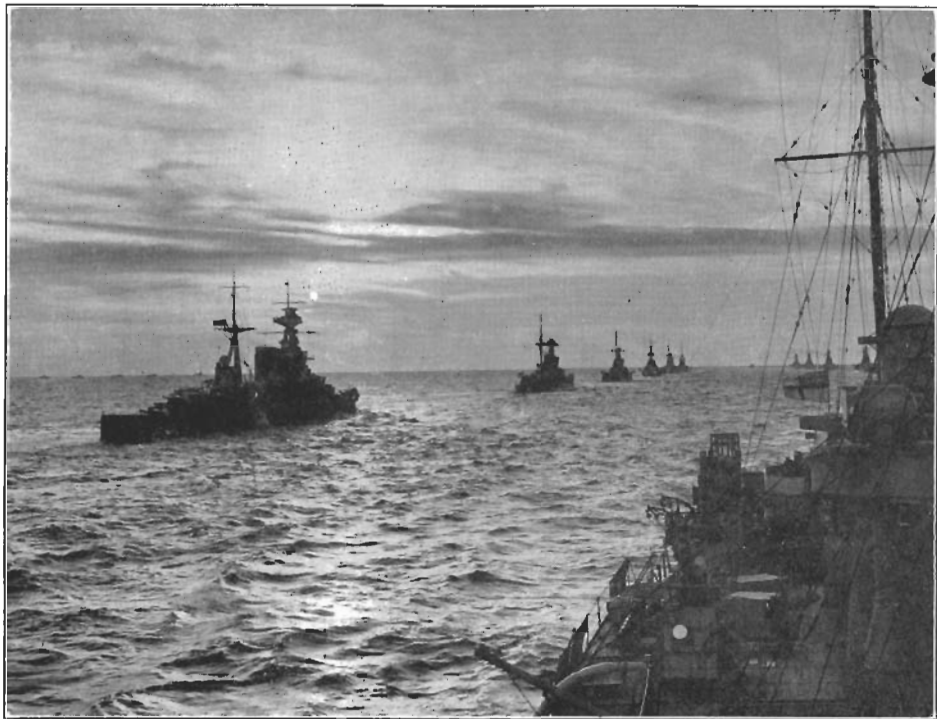
*Eyesight.*—As for Writers (see page 33).





*[Photo by Charles E. Brown.]*

A "SWORDFISH" ON PATROL OVER THE FLEET AT GIBRALTAR



*[Photo by Fox Photos, Ltd.]*

THE BRITISH FLEET AT SEA

Candidates sign an engagement to serve for 12 years from the date of entry provided their services are so long required.

		PAY				
		s. d.		s. d.		
Assistant Steward	.. ..	14	0			} A week, excluding allowances mentioned on page 13.
Steward	.. ..	22	9 to 27	5		
Leading Steward	.. ..	33	10 to 36	2		
Petty Office Steward	.. ..	45	6 to 51	4		
Chief Petty Officer Steward	.. ..	56	0 and up-		wards	

A clothing gratuity of £2 per annum is paid in certain ships and Naval Establishments where Officers' Stewards are employed as personal servants to Officers and as Mess Waiters.

## II.—NON-CONTINUOUS SERVICE

Men are entered for non-continuous service as Assistant Stewards between the ages of 18 and 30. Men over 30 years of age are permitted to enter in special cases with prior Admiralty sanction.

Candidates sign an engagement to serve for 5 years, provided their services are so long required. They are liable to discharge at any time for unsuitability, or on the paying off of their ships. Under certain conditions, however, men recommended on paying off, etc., who sign a new non-continuous service engagement and undertake to accept whatever Naval employment is found for them, may be borne on Depot books (with pay) for a limited period to await re-employment. They must accept no private shore engagement while so borne.

## PROMOTION TO RANK OF OFFICER

### Promotion to Warrant Officer and above

*Warrant Officers.*—Promotion to Warrant rank is attainable in vacancies, according to the requirements of the Service, in all branches (except Blacksmiths, Joiners, Painters, Plumbers).

Candidates for Warrant rank must pass an educational test, have a good record, be recommended by their Commanding Officers, and pass such professional examinations as may be required from time to time.

Warrant Officers enjoy special privileges, including cabins and their own mess.

The pay and allowances of Warrant Officers vary according to the branch, but range from £331 to £398 p.a. for a married officer with two children.

*Commissioned Officers from Warrant Rank.*—On reaching 10 years' seniority, as a general rule, Warrant Officers are promoted to Commissioned Officer from Warrant rank provided they have fulfilled certain specified conditions as regards service, etc.

Earlier promotion may be granted for war or other distinguished service.

*Lieutenant.*—A limited number of Officers of the rank of Lieutenant, or rank corresponding thereto, is allowed in each branch, and Commissioned Officers from Warrant rank are promoted as vacancies occur, if they are recommended and their records are satisfactory.

*Lieutenant Commander.*—A Lieutenant or Officer of corresponding rank may, on attaining 8 years' seniority as such, be granted the rank of Lieutenant-Commander.

## **Sub-Lieutenant, Sub-Lieutenant (E) and above**

### **I.—SEAMAN, ETC., BRANCHES**

In addition to the system of promotion to Warrant and higher ranks, the regulations provide for the promotion of specially selected ratings in the Seaman, Signal, and Wireless Telegraphy Branches to the rank of Sub-Lieutenant.

Candidates must have reached a suitable educational standard, pass an examination in Seamanship, and be recommended by their Commanding Officers and by a Selection Board as in all regards suitable, the final selection being made by the Admiralty. Substantial gratuities are granted towards the cost of uniform, etc. If selected, they reach the rank of Acting Sub-Lieutenant at the age of 21-24 and thereafter take their place on an equal footing with officers entered in other ways.

*Lieutenant.*—Sub-Lieutenants are promoted to the rank of Lieutenant after about  $1\frac{1}{2}$  to  $2\frac{1}{2}$  years, the period depending on the classes of certificates they obtain in the examinations they are required to pass for that rank.

*Lieutenant-Commander.*—On attaining 8 years' seniority as Lieutenant, an Officer is promoted to the rank of Lieutenant-Commander.

*Commander and above.*—Lieutenant-Commanders promoted as above are eligible for promotion to the rank of Commander and to higher ranks, by selection in competition with direct entry Officers.

### **II.—ENGINE-ROOM BRANCHES**

Ratings of the Engine-room branches (Engine-room Artificers and Mechanics) are similarly eligible for promotion by selection to the rank of Sub-Lieutenant (E).

Candidates must have passed a professional examination and be recommended. Gratuities towards the cost of uniform, etc., are granted as in the case of Sub-Lieutenants.

The further promotion of Sub-Lieutenants (E) is generally similar to that of Sub-Lieutenants as described above.

---

### **WIDOWS' PENSIONS**

The widows of Commissioned Officers and Warrant Officers are eligible, under certain specified conditions, for pensions of from £35 a year upwards, and their children for allowances of from £12 a year upwards according to circumstances. Higher rates are granted if the Officer's death is attributable to the Service.

## THE ROYAL MARINES

### Colonel-in-Chief—THE KING

#### The Royal Marines.

The Royal Marines form a portion of the Naval Forces of the country ; their organisation is, therefore, distinct from that of the Army, although they are fully trained as soldiers, and their motto, " Per mare, per terram " (by sea and land), aptly describes the nature of their duties. Service in this corps offers great attractions to lads having a liking for soldiering combined with service afloat. A proportion of the Royal Marines serve on board Men-of-War, the remainder in permanent barracks at the several Divisions named below.

The Corps includes a large proportion of Warrant and Non-Commissioned Officers ; there are thus many opportunities of promotion for smart and intelligent men of good character and sufficient education.

Young men between the ages of 17 and 23 are eligible for the corps of Royal Marines, provided they can produce satisfactory records of character.

Each recruit is subjected to a medical examination ; he must be strong, vigorous and healthy, free from bodily infirmity, be able to read and write reasonably well and have a fair knowledge of the first four rules of arithmetic.

*Terms of Enlistment (Long Service).*—For 12 years from the age of 18 or date of entry if older, with the prospect of joining the Royal Fleet Reserve on discharge, under certain conditions.

On completion of 12 years' service, men of good character, if recommended, are permitted to re-engage for a further term of 9 years to complete 21 years in all for pension.

#### PHYSICAL STANDARD

Age.	Height.	Chest.
	ft. in.	Inches.
17 to 18 .. ..	5 6½ .. ..	33½
18 to 19 .. ..	5 7 .. ..	34
19 and over .. ..	5 7½ .. ..	34½

*Eyesight.*—6/9 each eye, tested separately. For R.M. Band 6/12 each eye, tested separately. Colour vision Grade II.

These standards vary from time to time, and enquiry should be made of the nearest Recruiting Staff Officer, Royal Navy and Royal Marines before incurring travelling or other expenses. Any further information needed can be obtained from—

The Recruiting Staff Officers, see pages 47 and 48 for addresses, or from the Brigade Major, R.M., Divisional Headquarters, Portsmouth, Plymouth and Chatham, or Depot, R.M., Deal.

## WEEKLY RATES OF PAY

	<i>s. d.</i>	<i>s. d.</i>
Marine on enlistment .. .. .	14	0
Marine on completion of Depot training or after 1 year's R.M. service .. .. .	19	3
Marine on completing training ready for embarkation	21	0
Marine after 3 years' man's time .. .. .	23	4
Marine after 6 years' man's time .. .. .	25	8
Corporal .. .. .	32	1 to 34 5
Sergeant .. .. .	42	0 to 47 10
Colour-Sergeant .. .. .	52	6 to 59 6
Quartermaster-Sergeant, etc. .. .. .	63	0 upwards

*Buglers and Musicians.*

Boy Bugler on enlistment .. .. .	5	3
Boy Bugler on completing training or after 1 year ..	8	9
Boy Musician on enlistment .. .. .	5	3
Boy Musician after 1 year .. .. .	8	9
Bugler or Musician .. .. .	14	0
Bugler or Musician after 1 year as such .. .. .	21	0
Corporal, Sergeant, etc., as above		

Men of certain ranks can earn non-substantive pay for gunnery and other qualifications ranging from 1s. 9d. to 14s. a week.

*Extra Pay.*—There are many employments, especially for men who have some knowledge of a trade, whereby extra money may be earned both ashore and afloat, in the following capacities :—

Armourers	Motor Cyclists
Barbers	Motor Drivers
Blacksmiths	Pier Builders
Butchers	Printers
Carpenters	Searchlight Operators
Clerks	Servants
Cooks	Signallers
Dispensers	

as well as Military Training and Gunnery Instructors.

*Lodging Money.*—Non-Commissioned Officers and Men, when serving on shore, and not provided with quarters, receive Lodging Money at Naval rates.

*Free Rations.*—A liberal ration is issued free to all Royal Marines, whether serving ashore or afloat. If the ration is not issued in kind, an allowance is granted in lieu.

*General Advantages*

*Free Kit.*—A complete kit is issued free to all recruits, and renewed at regular intervals. Bedding is also issued free.

*Purchase of Discharge* before the expiration of engagement *cannot be claimed as a right*; but under normal conditions it may be granted, subject to the requirements of the Service at the time, and to evidence being produced that there are good reasons for the application.

*Allotments.*—Facilities are given for allotting and remitting money to families and friends, free of expense.

*Good Conduct Pay.*—1s. 9d. a week is given for each Good Conduct Badge earned up to a limit of three badges.

*Marriage.*—Men are permitted to marry, and are either provided with quarters or allowed to reside out of barracks whilst on shore. Marriage allowance is payable as shown on pages 7 and 8.

*Barracks, Amusements, etc.*—The Barracks at the Divisions are most comfortable and well found in all respects, there being a library, theatre, recreation rooms, canteens, and cricket and football grounds.

*Schools.*—Any man wishing to improve his education can attend school in the Barracks free of cost.

*Service.*—About two-thirds of the Corps are serving afloat. It will thus be seen that the life of a Royal Marine is very varied. A man is never long away from home, and after serving afloat he always returns to his own Divisional Headquarters, while opportunities occur of seeing many parts of the world.

*Promotion.*—There are many opportunities of promotion to Non-Commissioned Officer for intelligent men of good character, the average period of service before promotion being : Corporal, 5 years ; Sergeant, 9 years ; Colour-Sergeant, 14½ years.

There is besides a number of Warrant Officers in the Corps, to which position Senior Non-Commissioned Officers are appointed.

To these Warrant Officers are open 18 commissions as quartermasters, etc. Combatant Commissions, up to two a year, may also be granted from the ranks.

Quartermasters, etc., so promoted receive a further gratuity towards outfit. Officers promoted to Combatant Commissions from the ranks receive gratuities for outfit.

*Pensions. Non-commissioned Officers and Men.*—After 21 years' qualifying service, pensions are awarded for life. The amount varies according to conduct and the position filled.

Men disabled or invalided from the service are eligible for pensions or gratuities according to the circumstances of the case and the nature of the injury. Life pensions may be granted, irrespective of length of service to men invalided for severe injury contracted on duty.

Age pensions of 2s. 11d. a week will be granted in addition to their other pension to Life Pensioners of good character, when they reach the age of 55.

Pensions at varying rates may also be granted from the funds of Greenwich Hospital at the discretion of the Admiralty to Non-Commissioned Officers and Men of the Royal Marines incapacitated by ill-health.

*Pensions. Warrant Officers and Commissioned Officers from Warrant Rank.*—The pensions of Warrant Officers range from £109 to £163 per annum ; those payable to Commissioned Officers from Warrant Rank range from £181 to £226 per annum.

*Widows' Pensions, etc.*—Widows of Warrant Officers and Quartermasters are eligible, under certain specified conditions, for pensions of from £30 to £100 a year, and their children for an allowance of £10 a year, with higher rates when the death of the Officer is attributable to the Service.

### Royal Marine Bands for Service Afloat and Ashore

Candidates may join the Royal Marines for service in the Fleet as Musicians. They must be found medically fit, and will also be required to pass an educational test consisting of dictation and arithmetic.

*Age and Musical Knowledge on Enlistment.*—Boys between 14 and 14½ years may be accepted with only a slight knowledge of music; between 14½ and 18 years a more advanced knowledge commensurate with their age is necessary. Men between 18 and 23 years may be accepted if they are capable performers on either a string or wind instrument.

*Terms of Enlistment.*—All recruits are enlisted for 12 years' service, commencing from the age of 18 years, or from the date of entry if above 18 years of age, with the prospect of re-engaging, if recommended, for a further period of 9 years to complete 21 years' man's service for pension.

*Instruction.*—On first entry all recruits join the Royal Naval School of Music at Deal, for a course of instruction. At the age of 18 (or earlier if promoted to Musician before that age) they become available for service afloat.

#### RATES OF PAY, ETC.

		s.	d.	s.	d.	
On entry as Band Boy	.. ..	5	3			a week.
Band boy after 1 year's service	.. ..	8	9			..
Musician .. ..	.. ..	14	0			..
Musician after 1 year's service as such	.. ..	21	0			..
rising to .. ..	.. ..	25	8			..
Band Corporal .. ..	.. ..	32	1 to 34	5		..
Bandmaster, 2nd Class	.. ..	42	0 to 47	10		..
Bandmaster, 1st Class	.. ..	52	6 to 59	6		..

Band ranks enjoy the same advantages as regards free clothing, rations, medical attendance, pensions, allotment of money to relatives or friends, and amusements, etc., as other members of the Corps of Royal Marines.

Any further information concerning Royal Marine Bands will be supplied on application to:—

The Superintendent,

Royal Naval School of Music,

Deal, Kent.

## PART III—HOW TO JOIN THE ROYAL NAVY OR THE ROYAL MARINES

The first thing the candidate should do is to **FILL UP THE CARD** at the end of this book and send it or take it to the nearest Recruiting Officer (for address, see pages 47 and 48).

This will place you under no obligation at all. The Recruiting Officer will be willing to advise you, if you wish, on the choice of branch or the prospects before you if you join, and in any event will then tell you what to do next.



You are strongly advised to send the card to a Recruiting Officer before incurring any expense in travelling, as there may not be immediate vacancies in the rating you select.

Read carefully the following special notes and conditions of entry before you send off your card :

### SPECIAL NOTES

By joining the Royal Navy or the Royal Marines a boy or man obtains both that security of employment which, subject to good health and efficient performance of duties, is usually offered in the service of the State, and also security of the pay and pension rates to which he may be entitled by the King's Regulations, subject to the right of H.M. Government to alter the rates of pay and pensions during the period of service should it become necessary to do so at any time.

Alterations are liable to be made from time to time in standards of age, height, chest, and so on.

Recruiting Officers are in a position to give candidates information upon any changes in conditions that have taken place.

The official authority for the conditions under which boys and men accept service in the Royal Navy and Royal Marines is the King's Regulations and Admiralty Instructions and the amendments thereto published from time to time.

### Conditions of Entry

*Nationality.*—Candidates must be of British nationality, and the sons of British born subjects on both sides.

*Age.*—The age limits for entry vary, and will be found under each Branch. Candidates are required to produce their birth certificates, if possible. For candidates born in Ireland a baptismal certificate showing the date of birth will be accepted.

*Character.*—All recruits are required to be of very good character, and references for this will be required. Boys and men who have been in prison or reformatories are not accepted.

*Medical Examination.*—All candidates, before being accepted, are subjected to a strict medical and dental examination by a Naval Medical Officer to ascertain that they are free from any physical defect or disability. The Recruiting Officer arranges for a provisional examination when necessary, by a local Medical Practitioner at Government expense.

Height and chest measurements vary for different ratings. Height measurement is taken without shoes, chest measurement without clothes. The chest measurement is the mean between the maximum measurement with chest fully inflated and the minimum with chest deflated.

Full normal eyesight is usually required unless otherwise stated; and candidates for seaman and signal branches, and boys, must have normal colour vision. In most other ratings a slight degree of colour defectiveness does not disqualify. The wearing of glasses is not necessarily a bar to entry in most ratings, and if necessary they will be supplied at the public expense to recruits of all branches in which the wearing of them is permitted.

The number of missing or defective teeth allowed is dependent upon the position of such defects and varies with the age of the candidate, but in every case the mouth and teeth must be in a good, healthy and functional condition or capable of being rendered so by appropriate treatment.

Extensive dental disease or loss of many teeth may cause rejection, *e.g.*, 5 teeth missing or beyond repair in candidates for entry as boy, or 10 teeth in the case of candidates for man's rating, but these numbers are intended as a general guide only and are not rigidly adhered to provided the candidate's remaining teeth are sound and afford an adequate masticating area. In certain branches (Artificers and Shipwrights), the wearing of well-fitting artificial dentures is not a bar to acceptance, and if necessary they will be supplied at the public expense to recruits in these branches.

Candidates who are in doubt as to their medical and dental fitness for entry are recommended to obtain full information regarding the standards applicable to their age and the branch which they desire to join.

Fuller information as to medical and dental standards can be obtained on application to any Recruiting Office or Naval Depot. Candidates should, as a rule, apply by letter, or on the form at the end of this pamphlet, before incurring travelling expenses in proceeding to a Recruiting Office.

Candidates who are accepted by Recruiting Officers are sent, free of cost, to a Royal Naval Depot or Training Ship.

All candidates must be willing to undergo vaccination, re-vaccination and inoculation if required.

Candidates rejected at the final examination at a Naval Depot (excepting any who have declined to serve) are granted a free pass to their homes.

*Educational Test.*—Candidates are normally subjected to an educational test, the nature of which will depend upon the rating for which they enter. The professional test for special ratings is shown against each Branch in Part II of this book.

### **Discharge before Completion of Engagement**

Men are bound to complete the full term of their engagement, and cannot claim their discharge as a right before it is completed. In exceptional circumstances, however, provided they can be spared and have urgent reasons for wanting to leave, they may be allowed to purchase their discharge for an amount which varies with their rating and length of service. In some cases, free discharge may be granted on compassionate grounds if a man's family circumstances make it impossible to produce the amount required.

The Admiralty has the right to discharge a man at any time; but in practice men are not discharged before the completion of their engagements unless they fall below the physical standards required, or misconduct themselves seriously, or show so poor a standard of ability that they are unsuitable for retention.

H.M.S. *Nelson*.

## GENERAL MESS MENU

For week ending Saturday, 18th February, 1939

Day and Date	Breakfast	Dinner	Tea	Supper
Sunday, 12th	Bacon and Egg	Tomato Soup Roast Veal Legs Veal Stuffing Roast Potatoes Cauliflower Pears and Custard	Assorted Pastries	Coffee Chicken and Ham Roll
Monday, 13th	Porridge Kippers	Pea Soup Beef Steak Pudding Boiled Potatoes Marrowfat Peas Tapioca	Jam or Marmalade	Eggs and Chips
Tuesday, 14th	Oranges, Bacon, Kidney Egg	Cream of Tomato Soup Roast Pork Apple Sauce Roast Potatoes Cauliflower Mince Pies White Sauce	Fruit Cake Jam	Coffee Cold Ham Beetroot
Wednesday, 15th	Boiled or Fried Eggs	Oxtail Soup Stewed Steak Boiled Potatoes Cabbage Oranges	Congress Tarts	Fish and Chips
Thursday, 16th	Oranges Bacon and Tomatoes	Lentil Soup Mutton Legs Mint Sauce Roast Potatoes Cabbage Chocolate Pudding White Sauce	Doughnuts	Sausages and Mash
Friday, 17th	Oranges Porridge Cod Fillets	Kidney Soup Veal and Ham Pie Boiled Potatoes Cauliflower Stewed Fruit and Custard	Fish Paste	Preserved Meat Pickles
Saturday, 18th	Oranges Sausage and Egg	Pea Soup Roast Beef Roast Potatoes Haricot Beans Spotted Dick Custard Sauce	Jam or Marmalade	Liver and Mash

(Bread, butter, tea and the usual condiments are supplied in addition)

G. E. MAYNARD, *Paymaster Commander,*  
*Accountant Officer.*

ROYAL NAVAL TRAINING ESTABLISHMENT, SHOTLEY  
GENERAL MESS MENU

For week ending Saturday, 4th March, 1939

Day and Date	Breakfast	Dinner	Tea	Supper
Feb. Sunday, 26th	Bacon and Chips Coffee	Vegetable Soup* Roast Mutton Roast Potatoes Cabbage Mint Sauce Trifle	Lemon Cake Tea	Luncheon Sausage Sauce Cocoa
Monday, 27th	Porridge Kippers Tea	Irish Stew and Dumplings Mashed Potatoes Butter Beans Tapioca Pudding	Marinalade Tea	Sausage Mashed Potatoes Cocoa
Tuesday, 28th	Liver Onion Gravy Tea	Boiled Salt Silverside Mashed Potatoes Carrots Treacle Tart	Meat Paste Tea	Deville Mince Potatoes Cocoa
March Wednesday, 1st	Fried Fresh Fish Tea Apple	Steam Savoury Roll Mashed Potatoes Mashed Swedes Banana	Jam Tea	Pea Soup Cheese Cocoa
Thursday, 2nd	Fried Egg and Chips Tea	Roast Beef Roast Potatoes Cabbage Blancmange and Jam Sauce	Golden Syrup Tea	Fried Fresh Fish Cocoa
Friday, 3rd	Sausages Tomatoes Tea	Beef Steak Pudding Mashed Potatoes Marrowfat Peas Rice Custard Pudding	Ginger Cake Tea	Cottage Pie Cocoa
Saturday, 4th	Smoked Haddock Tea	Stewed Rabbit and Pork Mashed Potatoes Cabbage Jam Tart	Rock Cakes Tea	Brawn Beetroot Cocoa

Additional to menu :—Every day : Biscuits and Cocoa on turning out.  
Bread and butter for Breakfast and Tea.  
Bread and Margarine for Supper.

On days marked \* : Bread for Dinner if required.

Approved—E. R. CORSON,  
*Captain.*

R. F. BRAIDWOOD,  
*Pay. Lt.-Comdr.*

## LIST OF ROYAL NAVAL AND ROYAL MARINE RECRUITING OFFICERS

### ROYAL NAVAL DEPOTS AT HOME PORTS

The Commodores, Royal Naval Barracks, Portsmouth, Devonport,  
and Chatham.

#### RECRUITING HEADQUARTER STATIONS

Address	Tel. No.
The Recruiting Staff Officer, R.N. & R.M., at:	
<b>Birmingham, 5</b> ... ..	5/6, Edgbaston Street ... .. Midland 3355.
<b>Bristol, 1</b> ... ..	121, Victoria Street ... .. Bristol 20233.
<b>Derby</b> ... ..	96, Green Lane ... .. Derby 2047.
<b>Glasgow</b> ... ..	300, Bath Street ... .. Douglas 3089.
<b>Liverpool, 1</b> ... ..	Colonial Buildings, 44, Paradise St. Bank 9121.
<b>London, W.C.2</b> ... ..	27/33, Charing Cross Road ... Whitehall 8501.
<b>Manchester, 2</b> ... ..	Lloyds House, Albert Square ... Blackfriars 4102.
<b>Newcastle-on-Tyne</b> ... ..	184, Westmorland Road ... Newcastle 33779.
<b>Southampton</b> ... ..	6, Orchard Place, Queen's Park ... Southampton 2560.
The R.N. & R.M. Re- cruiter at:	
OUTSTATIONS	
<b>Aberdeen</b> ... ..	52, Market Street ... .. Aberdeen 6987.
<b>Belfast</b> ... ..	133, Donegall Street ... .. Belfast 25881.
<b>Brighton, 1</b> ... ..	118, Queens Road ... .. Brighton 5386.
<b>Cambridge</b> ... ..	Llandaff Chambers, Regent Street Cambridge 54060.
<b>Cardiff</b> ... ..	53, Charles Street ... .. Cardiff 334.
<b>Carlisle</b> ... ..	15A, Lonsdale Street ... .. Carlisle 1708.
<b>Chatham</b> ... ..	Opposite Town Hall ... .. Chatham 3221, Ext. 209.
<b>Coventry</b> ... ..	Warwick Road ... .. Coventry 60044.
<b>Devonport</b> ... ..	New Passage Hill ... .. Devonport 740, Ext. 255.
<b>Dorchester</b> ... ..	Top o' Town House ... .. Dorchester 664.
<b>Dumfries</b> ... ..	3, Loreburn Chambers, Gt. King St. Dumfries 1147.
<b>Dundee</b> ... ..	20, Barrack Street ... .. Dundee 4916.
<b>Edinburgh</b> ... ..	22, Haddington Place ... .. Edinburgh 25754.
<b>Exeter</b> ... ..	31, Queen Street ... .. Exeter 2265.
<b>Hull</b> ... ..	Government Buildings, Springbank Hull 16368.
<b>Inverness</b> ... ..	3, Union Street ... .. Inverness 668.
<b>Ipswich</b> ... ..	16, Crown Street ... .. Ipswich 4137.
<b>Lancaster</b> ... ..	12, The Arcade ... .. Lancaster 1197.
<b>Leeds</b> ... ..	21, New Station Street ... .. Leeds 28195.
<b>Leicester</b> ... ..	97, London Road ... .. Leicester 21112.
<b>Lincoln</b> ... ..	13, Bank Street ... .. Lincoln 1898.
<b>Northampton</b> ... ..	35, Sheep Street ... .. Northampton 1711.
<b>Norwich</b> ... ..	16, Princes Street ... .. Norwich 3419.
<b>Nottingham</b> ... ..	18, Trinity Walk, Parliament Street Nottingham 44863.
<b>Portsmouth</b> ... ..	13, Edinburgh Road ... .. Portsmouth 6457.
<b>Preston</b> ... ..	114, Lancaster Road ... .. Preston 2361.
<b>Reading</b> ... ..	42, Caversham Road ... .. Reading 2851.
<b>Salisbury</b> ... ..	58, Catherine Street ... .. Salisbury 2517.
<b>Sheffield, 1</b> ... ..	33, York Street, East Parade ... Sheffield 21476.
<b>Stoke-on-Trent</b> ... ..	Cross Street ... .. Stoke-on-Trent 48392.
<b>Stratford, E.15</b> ... ..	77, The Grove ... .. Maryland 1479.
<b>Swansea</b> ... ..	Dryslwyn House, Delabeche Street Swansea 5383.
<b>West Hartlepool</b> ... ..	5, Upper Church Street ... .. West Hartlepool 3520.
<b>Wimbledon, S.W.19</b> ... ..	5, Stanley Road ... .. Liberty 1283.
<b>Winchester</b> ... ..	1A, Southgate Street ... .. Winchester 625.
<b>Worcester</b> ... ..	37, Foregate Street ... .. Worcester 1791.
<b>Wrexham</b> ... ..	6, Brook Street ... .. Wrexham 2955.

Candidates for the *Royal Marines* may also apply to :—  
Royal Marine Divisions and Depot (see page 39).

And *Band Ratings (for Service in H.M. Fleet)* to :—  
The Superintendent, R.N. School of Music,  
Depot, R.M.,  
Deal.