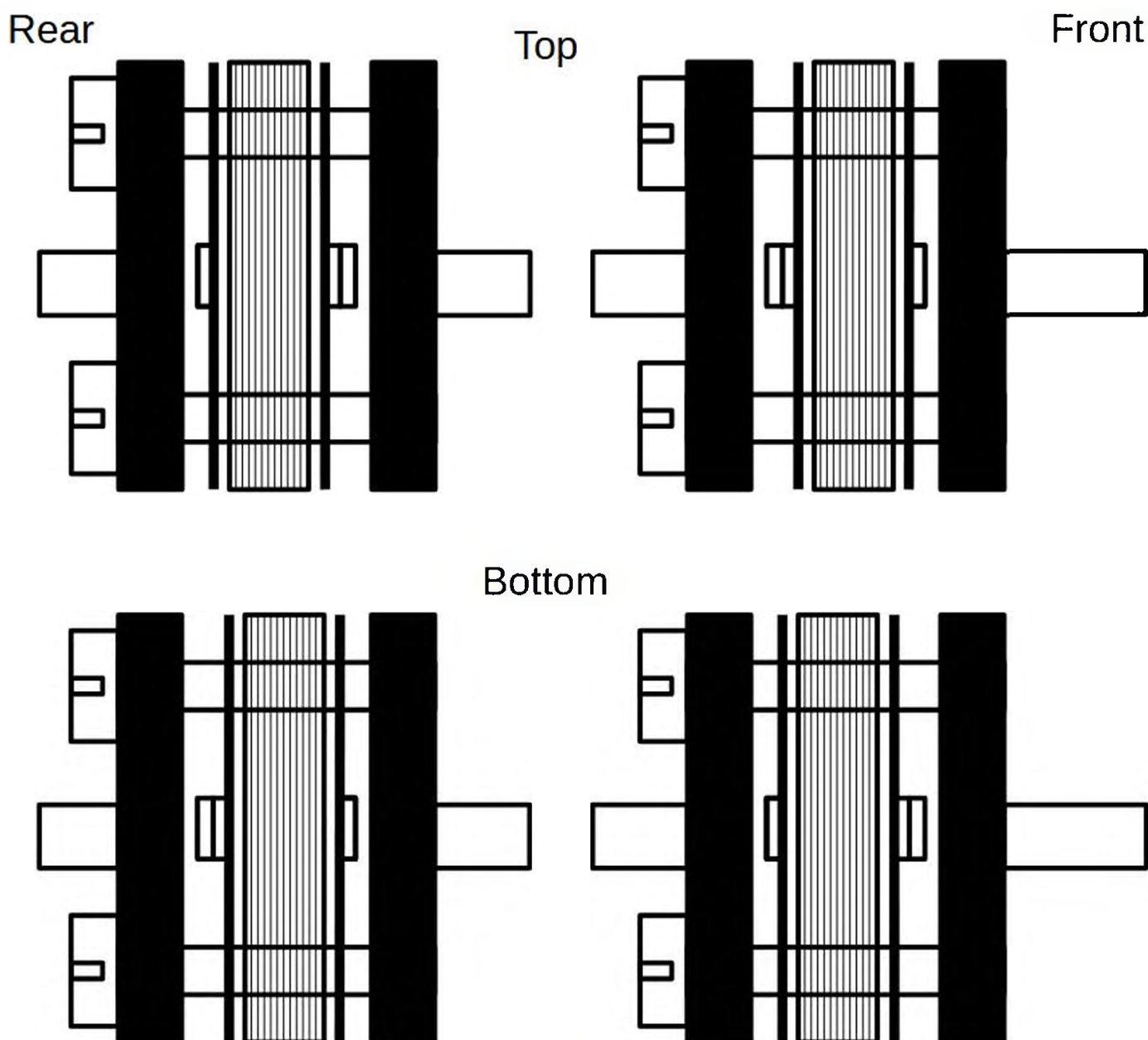


## M11 Tuning Capacitors



With knob set to 0 degrees on top (red) cursor, capacitors are at maximum capacitance.

To remove tuning capacitor assemblies.

Remove knob by hammering out pin. Remove 4BA cheese head screw on ebonite plate at rear of capacitor. Slide out tinned copper wire joining piece and separate wires.

Remove 2 2BA countersunk screws that join ebonite plate to coil box holder. Remove 4 2BA cheese head screws and remove ebonite plate, along with 4 spacers. Support capacitor assembly and remove 4 2BA countersunk screws from front panel.

When dismantling capacitors, mark ebonite frames, capacitor fixed plates so that they can be re-assembled in the same order and orientation.

The knobs are hand drilled and only fit one capacitor. All parts are different sizes. Even the cast brass frames! Beware! Only dismantle one capacitor at once.